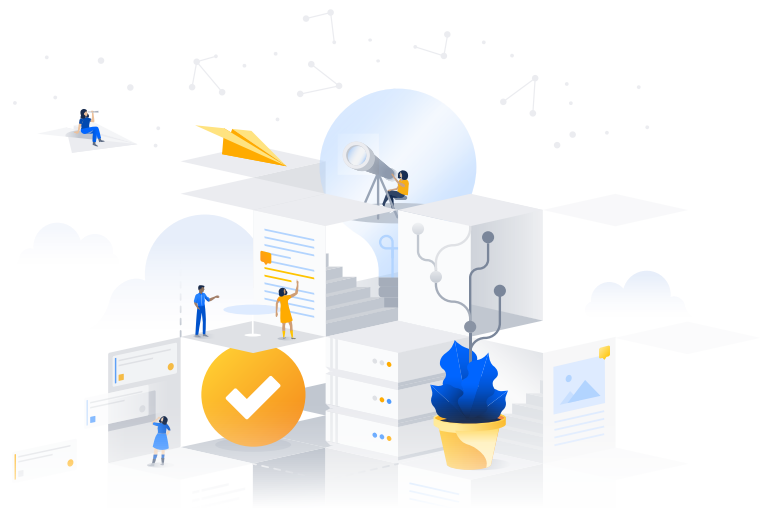




Unlock the agility of your enterprise

Jira Align connects your business strategy to technical execution



Transformation starts with connected teams



Get real-time visibility

Aggregate team-level data to make all work visible across your enterprise in real-time.



Align every team to strategy

Get everyone on the same page to determine scope, roadmaps and dependencies across teams and portfolios.



Optimize for customer value

Connect strategic investments with customer value created to drive outcomes faster and more reliably.

Scale with every role together in a single platform

Portfolio Managers

Communicate the value of funding strategic initiatives to investors, analysts, and employees

Executives

Connect strategy to execution to drive enterprise value of your high-level mission and vision

Delivery Teams

Execute against sprint work that tracks back to your company's high-level strategy

Program Managers & Release Train Engineers

Ensure programs run smoothly and resources are perfectly allocated for on-time delivery

Product Managers

Manage idea intake, prioritize your feature backlog, and track progress with real-time roadmaps

Transformation Teams

Drive digital transformation with a framework customized to scale agile in your enterprise

Learn more at atlassian.com/jira-align

Flexible framework support

The only platform that lets you implement and extend any framework at scale, including hybrid and custom frameworks:

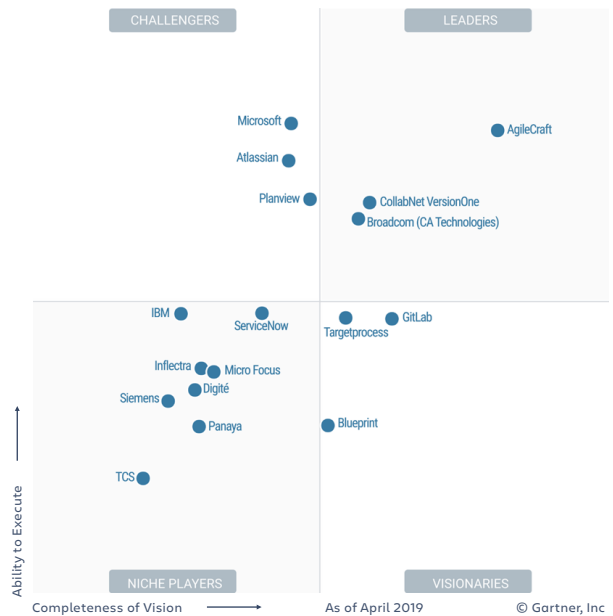
- SAFe - Scaled Agile Framework
- LeSS - Large Scale Scrum
- DA - Disciplined Agile
- Scrum@Scale
- Spotify
- Custom or hybrid frameworks

Extend the power of teams working in Jira

With Jira Align, keep your teams working in Jira Software while extending coordination and planning to the program, portfolio and enterprise level.

Leader in Gartner's 2019 Magic Quadrant

Jira Align was named a Leader in the latest assessment of Enterprise Agile Planning Tools



Trusted by customers worldwide



Learn more at
atlassian.com/jira-align

